

Kid's Mock Turtle Polar Sweater

#521 \$7.00

Level 2—Easy

SUGGESTED FABRICS

GREEN PEPPER
ORDER #

NOTE: Fabric must have crosswise stretch.

Outer Fabric:

PolarTec® 200 F76B

PolarTec® 300 F76

Lining Fabric:

Micro Fleece F78M

NOTIONS

GREEN PEPPER
ORDER #

3/4 yd – 1/8" Shock Cord CS-018B

1 – Cord Toggle TG-ST-L

1 – All-polyester Thread TH-150

FABRIC

| 60" Fabric | 4 | 6 | 8 | 10 | 12-14 |
|---------------------|--------|----------|----------|----------|----------|
| Outer Fabric | 1 yd | 1 1/8 yd | 1 1/4 yd | 1 1/4 yd | 1 3/8 yd |
| Lining Fabric | 1/4 yd | 1/4 yd | 1/4 yd | 3/8 yd | 3/8 yd |

MEASUREMENTS

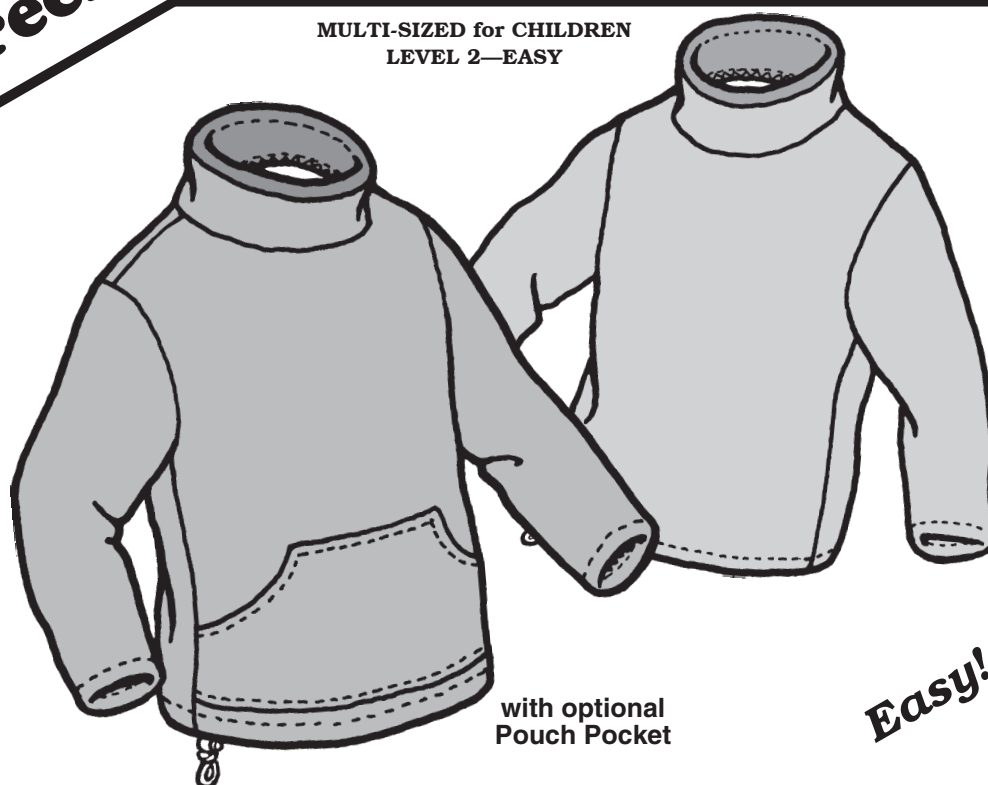
| SIZE | 4 | 6 | 8 | 10 | 12-14 |
|----------------------------|---------|---------|---------|---------|---------|
| Chest | 23" | 25" | 27" | 28 1/2" | 31 1/2" |
| Waist | 21" | 22" | 24" | 25" | 26 1/2" |
| Finished Back Length | 16 3/8" | 17 7/8" | 19 3/8" | 20 7/8" | 22 3/8" |

THE
green pepper
INC.

521

KID'S MOCK TURTLE POLAR SWEATER

MULTI-SIZED for CHILDREN
LEVEL 2—EASY



with optional
Pouch Pocket

Easy!

DESIGNED FOR POLARTEC® FLEECE. Fabric must have crosswise stretch for proper sizing.

This much fabric



must stretch to here

