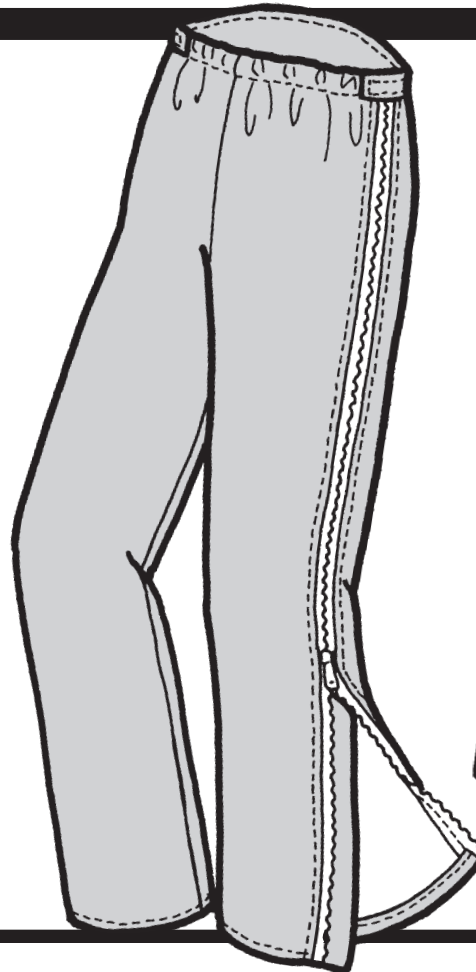
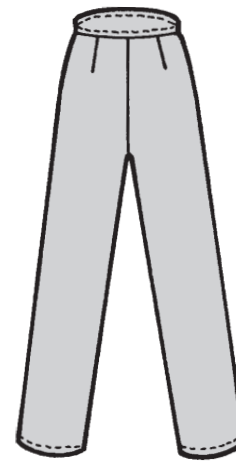


**CHILDREN'S  
CASCADE POWDER PANTS**



**MULTI-SIZED PATTERN  
LEVEL 3—MEDIUM**



BACK

**MEASUREMENTS:**

**IMPORTANT:** When selecting pattern size, take measurements over clothing that will be worn under finished garment.

SIZE	4	6	8	10	12
Waist.....	21"(53.5 cm)	22"(56 cm)	24"(61 cm)	25"(63.5 cm)	26"(66 cm)
Hip .....	24"(61 cm)	26"(66 cm)	28"(71 cm)	30"(76 cm)	32"(81 cm)
Inseam....	14 <sup>1</sup> / <sub>4</sub> "(36 cm)	16 <sup>1</sup> / <sub>2</sub> "(42 cm)	19 <sup>3</sup> / <sub>4</sub> "(50 cm)	22 <sup>3</sup> / <sub>4</sub> "(58 cm)	25 <sup>3</sup> / <sub>8</sub> "(64.5 cm)

**FABRIC:**

Size—	4-6	8-10	12
Fabric .....	60" 1 <sup>1</sup> / <sub>4</sub> yd (1.2 m)	1 <sup>3</sup> / <sub>8</sub> yd (1.3 m)	1 <sup>1</sup> / <sub>2</sub> yd (1.4 m)
.....	45" 1 <sup>3</sup> / <sub>8</sub> yd (1.3 m)	1 <sup>1</sup> / <sub>2</sub> yd (1.4 m)	2 <sup>1</sup> / <sub>2</sub> yd (2.3 m)
Needlepunch..	45" 1/8 yd (.12 m)	1/8 yd (.12 m)	1/8 yd (.12 m)

**NOTIONS:**

- 2 ..... Two-way Separating Zippers:
  - 26" (66 cm)—size 4-6
  - 38" (96.5 cm)—size 8-12
- 1/2 yd (.46 m) .. 1" (2.5 cm) Elastic
- 1/4 yd (.23 m) .. 3/4" (2 cm) Velcro
- 1 ..... All-Polyester Thread

**SUGGESTED FABRICS:**

Tightly-woven Lightweight Waterproof, Waterproof Breathable, or Water-Repellent Fabric.