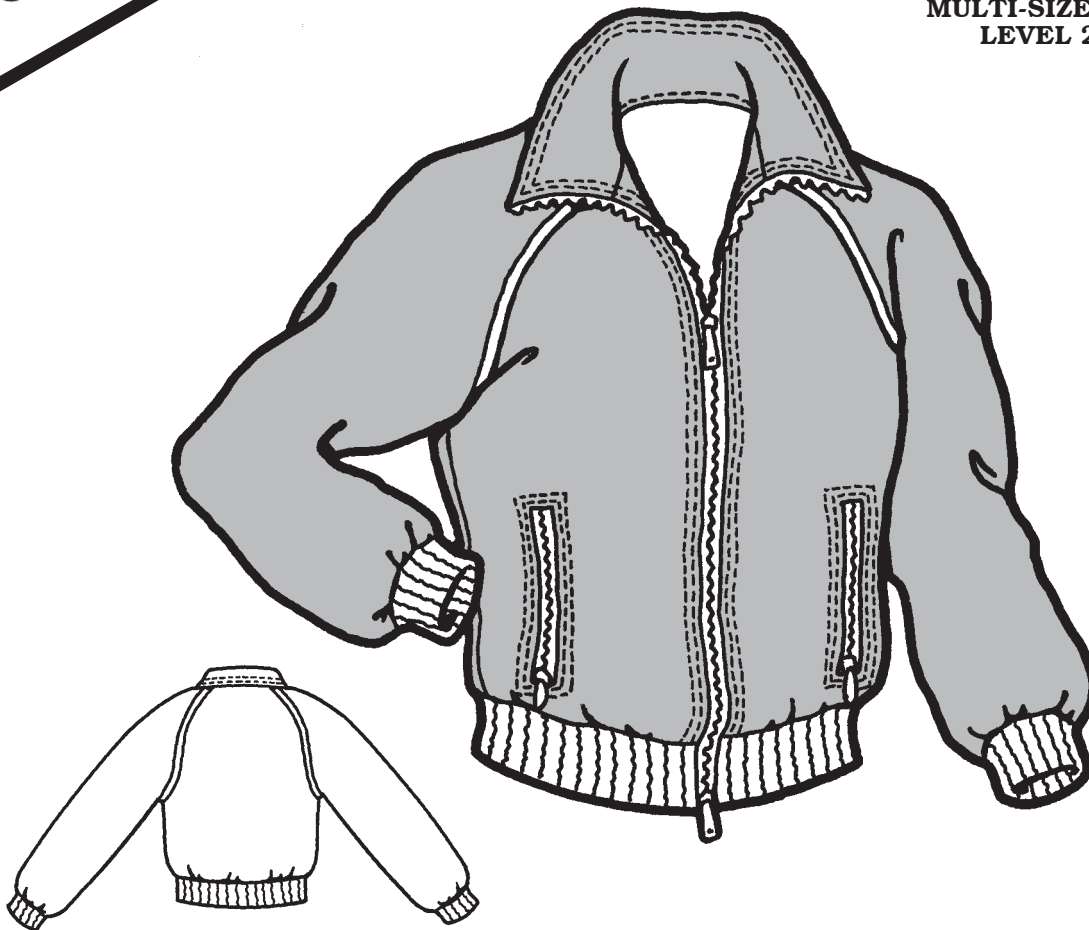


**WOMEN'S**  
**CANYON CREEK WINDBREAKER**

**MULTI-SIZED PATTERN**  
**LEVEL 2—EASY**



**MEASUREMENTS:**

**IMPORTANT:** When selecting pattern size, take measurements over clothing that will be worn under finished garment.

SIZE	6	8	10	12	14	16	18
Bust .....	30 1/2"	31 1/2"	32 1/2"	34"	36"	38"	40"
Waist .....	23"	24"	25"	26 1/2"	28"	30"	32"
Hip .....	31"	33 1/2"	34 1/2"	36"	38"	40"	42"
Back Waist Length	15 1/2"	15 3/4"	16"	16 1/4"	16 1/2"	16 3/4"	17"

**FABRIC:**

	6-14	16-18
Main Fabric .....	60" 1 1/2 yd (1.4 m)	5 1/8 yd (1.5 m)
.....	45" 2 1/8 yd (2.0 m)	2 1/4 yd (2.1 m)

**SUGGESTED FABRICS:**

Tightly-woven Lightweight Waterproof, Waterproof Breathable, or Water-Repellent Fabric.

**NOTIONS:**

- 1 ..... 28" Separating Zipper
- 2 ..... 7" Pocket Zippers
- 2 1/2 yd (2.3 m) ... 1/8" Cord for Piping
- 1/8 yd (.12 m) ..... Fabric for Piping
- 3/8 yd (.34 m) ..... Heavy Nylon Ribbing
- 1/8 yd (.12 m) ..... Interfacing
- 1 ..... All-polyester Thread