

# SALE! 2008 Update

We ship fabric, hardware and zippers to addresses in the USA only.



15% OFF

## HEAVYWEIGHT WATERPROOF FABRICS

Uses: Luggage, backpacks, cargo bags, tarps, spray decks, gaiters, totes, etc.

### F1 – Imperial – 600 Denier

Navy, woodland camo 11.36 oz/sq yd 60" wide **Sale Price/yd \$7.25**

Tough, durable PVC vinyl coating. 100% polyester, abrasion resistant, flame retardant, waterproof and windproof.

### F2 – Cordura® – 1000 Denier

Dark grey, tan 11 oz/sq yd 60" wide **\$11.88**

100% Nylon fabric with a 1 oz. polyurethane coating. Extra strong, abrasion resistant, waterproof with durable, water repellent finish.

### F4 – Pack Cloth – 420 Denier

Dark grey, purple, red, royal 11 oz/sq yd 60" wide **\$6.75**

100% Nylon fabric with a 1 oz. polyurethane coating. Extra strong, abrasion resistant, waterproof with durable water repellent finish.

15% OFF

## LIGHTWEIGHT WATERPROOF FABRICS

Uses: foul weather gear, tent flies, banners, dry bags, boat covers, shower curtains, etc.

### F5T – Coated Nylon Tafetta

White 2.7 oz/sq yd 60" wide **Sale Price/yd \$4.98**

100% Nylon with 1/2 oz. polyurethane coating. Wind & waterproof, durable water repellent finish.

### F5R – Coated Nylon Ripstop

Black, red, royal, yellow 2.7 oz/sq yd 60" wide **\$5.95**

100% Nylon with 1/8" ripstop grid. DWR, fire retardant, ultraviolet-inhibiting finishes. 1/2 oz. polyurethane coating.



40-50% OFF

## WATER REPELLENT FABRICS

Uses: Jackets, running suits, linings, tents, stuff sacks shower curtains, sleeping bags.

### F21 – Sueded Microfiber

Bright royal 2.2 oz/sq yd 60" wide **Sale Price/yd \$3.49**

Durepel long-lasting water-repellent finish. Optimum balance of breathability & water resistance.



### F22 – Hi-Count Nylon Taffeta

Brown, cinnamon, jade, wine, light grey, white, forest, red 2.5 oz/sq yd 60" wide **\$3.49**

Great for linings! 100% Nylon—160 x 90 threads/sq inch, 70 denier, downproof. Superior quality. DWR finish.



### F23 – Tactel – 2-ply Echo

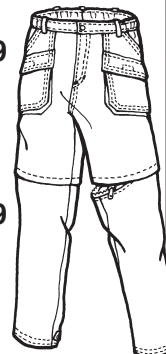
Turquoise, jade, fuchsia, hot pink 3 oz/sq yd 60" wide **\$3.49**

100% Nylon with a soft sheen, durable wind & water-repellent finish.

### F26 – Supplex

Royal, warm grey, white, sage, dark red, teal 2.5-3.5 oz/sq yd 60" wide **\$3.49**

100% Nylon. A cotton hand with a high-tech DWR water-repellent finish.



### F26N – Supplex

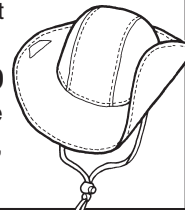
Grey, olive, navy, red, tan 2.5-3.5 oz/sq yd 60" wide **\$3.49**

Great for zip-leg pants & other light, breathable, quick-dry clothing. 100% Nylon. A cotton hand, without DWR water-repellent finish.

### F27B – Tuftex

Cherry, light grey 45" wide **\$3.49**

100% Nylon, medium weight water-repellent, with DWR finish.



25-50% OFF

## WATERPROOF BREATHABLE FABRICS

Uses: rainwear, foul weather gear, insulated outerwear, gaiters, etc.

### F6 – Goretex® – 2 ply

Black ripstop, navy 6 oz/sq yd 60" wide **Sale Price/yd \$14.98**

100% Nylon Supplex face fabric, waterproof breathable coating. Must be lined.

### F6 – Goretex® – 3 ply

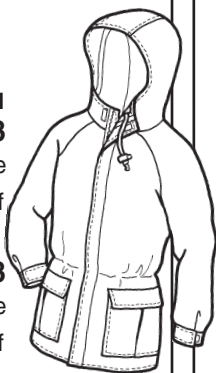
Tan ripstop 6 oz/sq yd 60" wide **\$18.98**

100% Nylon Supplex face fabric, waterproof breathable coating. Doesn't need lining.

### F7 – Ultrex® – 2 ply

Red, tan, grey 6 oz/sq yd 60" wide **\$8.98**

100% Nylon Supplex face fabric, waterproof breathable coating. Must be lined.



Minimum order 1 yard.

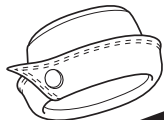
SAMPLES: \$1.00 each.

# SALE! 2008 Update

We ship fabric, hardware and zippers to addresses in the USA only.

## POLARTEC® FLEECES

100% Polyester, with high warmth to weight ratio, absorbs little water, dries very quickly.



Uses: Jackets, vests, pants, gloves, hats, slippers, socks, blankets, or linings for outerwear.

20% OFF

**F76 – PolarTec® 300** Sale Price/yd **\$12.98**

Brown 9 oz/sq yd 60" wide  
Heavy weight double-faced fleece.

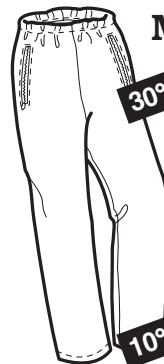


15% OFF

**F76B – PolarTec® 200** Sale Price/yd **\$11.98**

Cocoa 7.8 oz/sq yd 60" wide  
Medium weight double-faced fleece.

## MICROFLEECES



30% OFF

**F77B – Windstopper Microfleece** Sale Price/yd **\$13.98**

Black 7-9 oz/sq yd 58-60" wide  
100% Polyester fleece with wind-block membrane, water-repellent face & knit lining.

10% OFF

**F78M – PolarTec® Microfleece 100** Sale Price/yd **\$8.98**

Buff, charcoal, iris, light loden, wine  
Great for cozy lightweight garments, hats, scarves, throws and blankets. A deliciously soft alternative to 200 weight fleece.

## BUCKLES



**Double Bar** \$1.50

2" Black Delrin  
Order #: DB200B



**Cam** \$1.50

3/4" Black Delrin  
Order #: CA-034B

## SNAP HOOKS



**Heavy Duty Swivel Snap** \$ .55

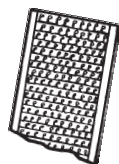
2" wide, swivels and rotates.  
Order #: SW-200B/S

## HOOK & LOOP – Dense, superior grip!

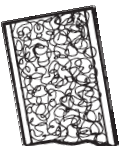
1 yd. minimum Hook or Loop.

Prices are for one side only.

Please use order numbers to indicate hook and/or loop.



HOOK



LOOP

### Regular Velcro: Gold

S-VRH-034 – 3/4" Hook \$ .48/yd

S-VRL-034 – 3/4" Loop \$ .48/yd

### Regular Velcro: White

S-VRH-200 – 2" Hook \$ .90/yd

S-VRL-200 – 2" Loop \$ .90/yd

### Pressure-sensitive Velcro (Adhesive-backed)

S-VPL-034 – 3/4" Loop, Black \$ .99/yd

S-VPH-034 – 3/4" Hook, White \$ .99/yd

S-VPL-034 – 3/4" Loop, White \$ .99/yd

30% OFF

## STRETCH FABRICS

Sale Price/yd

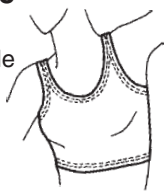
**F32 – 4-way Stretch** Sale Price/yd **\$10.98**

**Nylon/Lycra Tricot Knit**

Red 5.5-6 oz/sq yd 58-60" wide

Uses: Bicycle & aerobic wear, swimsuits, tights, racing suits.

80% Nylon, 20% Lycra. Densely knit, snag resistant.

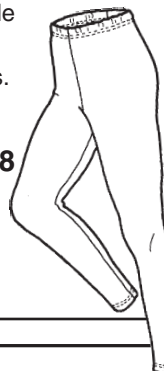


**F38S – PolarTec® 4-way Stretch Fleece** Sale Price/yd **\$10.98**

Periwinkle, purple, spruce, royal, red

Uses: Great for long underwear, leggings.

94% Polyester, 4% Lycra



**F40P – Cotton/Poly/Lycra** Sale Price/yd **\$10.98**

Royal, brown 60" wide

Uses: Exercise wear, tights.

44% cotton, 44% Polyester, 10% Lycra  
Soft & absorbent.

30% OFF

## MISCELLANEOUS FABRICS

Sale Price/yd

**F91 – Heavy-Duty Ribbing** Sale Price/yd **\$10.98**

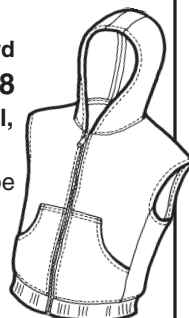
Dark grey, jade, magenta, purple, royal, teal blue, white, wine

15-18 oz/sq yd 15-17" tube

Uses: waistbands, cuffs, or collars for outerwear.

100% Nylon. Fast drying.

Colors match zippers.



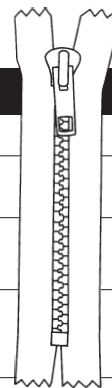
Minimum order 1 yard.

SAMPLES: \$1.00 each.

# SALE! 2008 Update

We ship fabric, hardware and zippers to addresses in the USA only.

**ALL ZIPPERS 50-60% OFF RETAIL PRICE!**

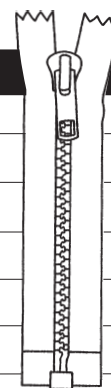


## NON-SEPARATING #5 MOLDED TOOTH ZIPPERS

| LENGTH | PRICE  | ORDER #  | COLORS  |
|--------|--------|----------|---|
| 9"     | \$ .50 | S-09-M5N | Beige, jade, teal blue, turquoise, wine   |
| 15"    | \$ .60 | S-15-M5N | Fuchsia, kelly, orange, red, royal  |
| 18"    | \$ .70 | S-18-M5N | Beige, cream, dark grey, fuchsia, jade, kelly, light blue, light grey, orange, sage, teal blue, turquoise, wine |
| 22"    | \$ .50 | S-22-M5N | Dark grey, tangerine  |

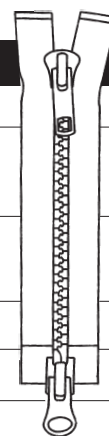
## ONE-WAY SEPARATING #5 MOLDED TOOTH ZIPPERS

| LENGTH | PRICE  | ORDER #  | COLORS  |
|--------|--------|----------|---|
| 12"    | \$ .50 | S-12-M51 | Magenta, royal  |
| 14"    | \$ .80 | S-14-M51 | Royal, wine   |
| 16"    | \$ .90 | S-16-M51 | Beige, royal, wine  |
| 22"    | \$1.00 | S-22-M51 | Jade, kelly   |
| 24"    | \$1.05 | S-24-M51 | Dark grey, fuchsia, jade, light grey, royal, teal blue, turquoise, wine |
| 34"    | \$1.10 | S-34-M51 | Kelly, yellow   |



## TWO-WAY SEPARATING #5 MOLDED TOOTH ZIPPERS

| LENGTH | PRICE  | ORDER #  | COLORS  |
|--------|--------|----------|---|
| 26"    | \$1.20 | S-26-M52 | Dark grey, fuchsia, jade, kelly, light grey, teal blue, turquoise, wine   |
| 28"    | \$1.25 | S-28-M52 | Dark grey, fuchsia, jade, light blue, light grey, purple, red, royal, teal blue, turquoise, wine                          |
| 30"    | \$1.30 | S-30-M52 | Kelly, royal  |
| 36"    | \$1.40 | S-36-M52 | Kelly, light blue, light grey, orange   |
| 38"    | \$1.45 | S-38-M52 | Kelly, light grey, orange, red, royal, wine, yellow   |
| 40"    | \$1.50 | S-40-M52 | Dark grey, fuchsia, jade, kelly, light blue, light grey, orange, purple, teal blue, royal, turquoise, white, wine, yellow |



## NON-SEPARATING #2.5 COIL ZIPPERS

| TYPE     | LENGTH | PRICE  | ORDER #  | COLORS  |
|----------|--------|--------|----------|---|
| Neckline | 6"     | \$ .25 | S-06-C2N | Royal   |
| Pocket   | 7"     | \$ .25 | S-07-C2P | Light blue, royal, sage, teal blue, turquoise |