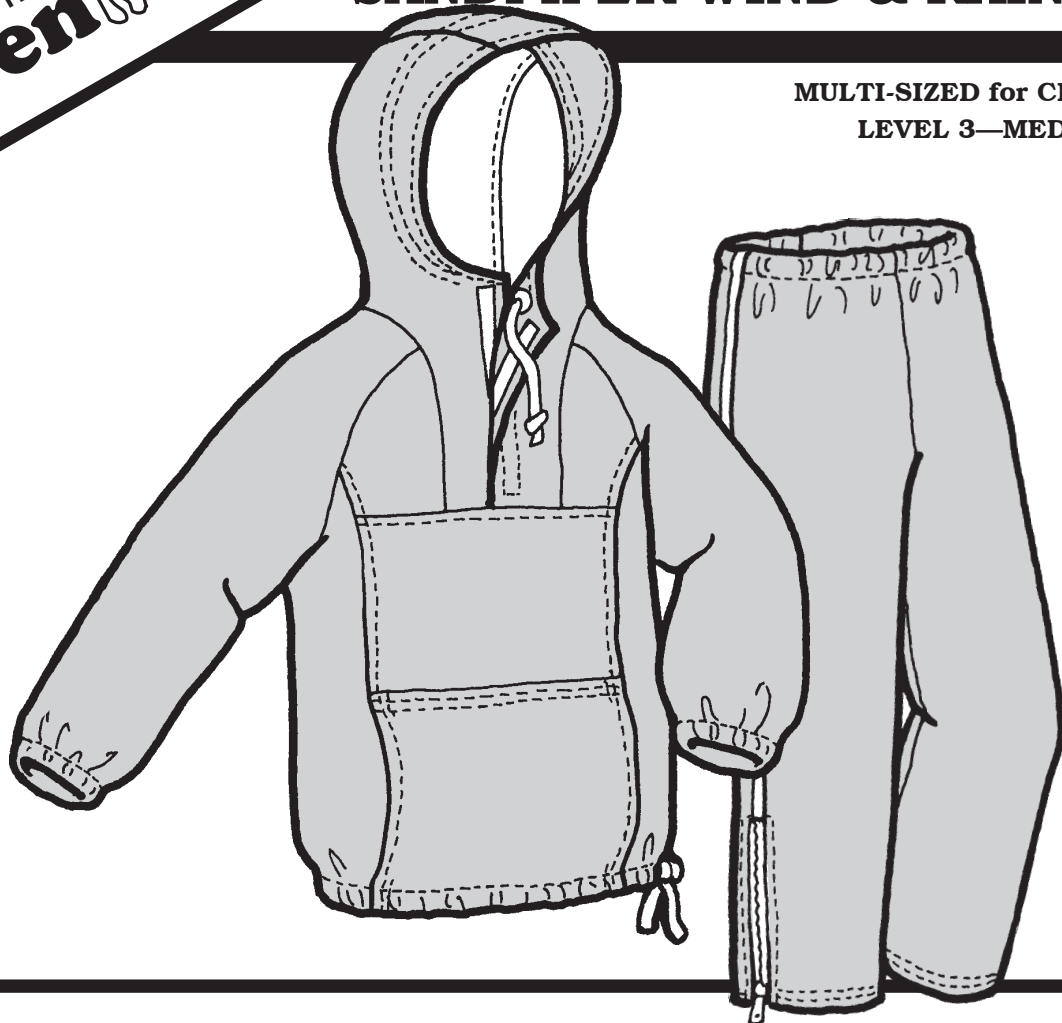


CHILDREN'S
SANDPIPER WIND & RAIN SUIT



MULTI-SIZED for CHILDREN
LEVEL 3—MEDIUM

MEASUREMENTS:

IMPORTANT: When selecting pattern size, take measurements over clothing that will be worn under finished garment.

SIZE	4	6	8	10	12
Chest	23"	25"	27"	28 1/2"	30"
Waist	21"	22"	24"	25"	26"
Hip	24"	26"	28"	30"	32"
Back Waist Length .	9 1/2"	10 1/2"	12"	12 3/4"	13 1/2"

FABRIC:

JACKET:

	4-6	8-10	12
..... 60"	1 5/8 yd (1.5 m)	1 3/4 yd (1.6 m)	1 7/8 yd (1.7 m)
..... 45"	2 yd (1.8 m)	2 1/8 yd (2.0 m)	2 1/4 yd (2.1 m)

PANTS:

..... 60"	1 yd (.92 m)	1 1/8 yd (1.0 m)	1 1/4 yd (1.2 m)
..... 45"	1 yd (.92 m)	1 7/8 yd (1.7 m)	2 1/2 yd (2.3 m)

FULL SUIT:

..... 60"	2 5/8 yd (2.4 m)	2 7/8 yd (2.6 m)	3 1/8 yd (2.9 m)
..... 45"	3 yd (2.7 m)	3 5/8 yd (3.3 m)	3 3/4 yd (3.5 m)

NOTIONS:

1 All-polyester Thread

JACKET:

3 1/4" Grommets
 3 yd (2.7 m) 1/8" Cord
 1 Cord Toggle Lock
 1/2 yd (.46 m).. 3/8" Elastic
 1/3 yd (.3 m) ... 3/4" Velcro

PANTS:

2 9" Non-Separating Zippers
 3/4 yd (.7 m) ... 1" Elastic
 2 yd (1.8 m) 1/16" Cord for Piping (opt.)
 1/8 yd (.12 m) . Fabric for Piping (opt.)

SUGGESTED FABRICS:

Tightly woven Lightweight Waterproof, Waterproof Breathable, or Water-Repellent Fabric.