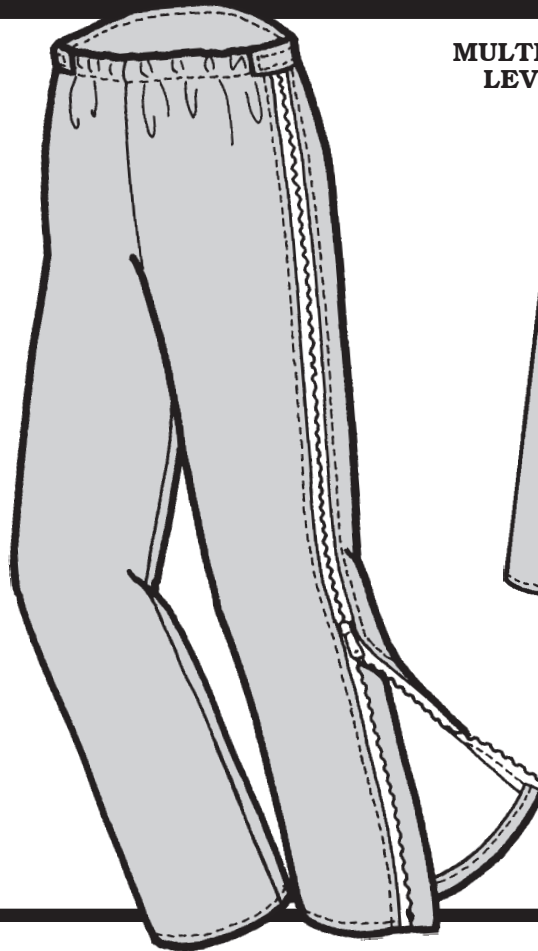
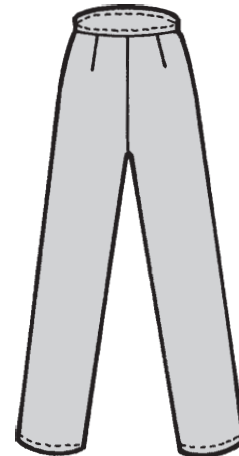


**MEN'S  
CASCADE POWDER PANTS**



**MULTI-SIZED PATTERN  
LEVEL 3—MEDIUM**



BACK

**MEASUREMENTS:**

**IMPORTANT:** When selecting pattern size, take measurements over clothing that will be worn under finished garment.

SIZE	28	30	32	34	36	38	40	42
Waist .....	28"	30"	32"	34"	36"	38"	40"	42"
Hip .....	34"	36"	38"	40"	42"	44"	46"	49"
Inseam	31 1/2"	31 1/2"	31 1/2"	31 1/2"	31 1/2"	31 1/2"	31 1/2"	31 1/2"

**FABRIC:**

Size—	28-34	36-42
Fabric .....	60" 17/8 yd (1.7 m)	2 1/2 yd (2.3 m)
.....	45" 2 3/4 yd (2.5 m)	2 7/8 yd (2.6 m)
Needlepunch...	45" 1/8 yd (.12 m)	1/8 yd (.12 m)

**NOTIONS:**

- 2 ..... 40" (102 cm) Two-way Separating Zippers
- 3/4 yd (.69 m) .... 1" (2.5 cm) Elastic
- 1/4 yd (.23 m) .... 3/4" (2 cm) Velcro
- 1 ..... All-Polyester Thread

**SUGGESTED FABRICS:**

Tightly-woven Lightweight Waterproof, Waterproof Breathable, or Water-Repellent Fabric.