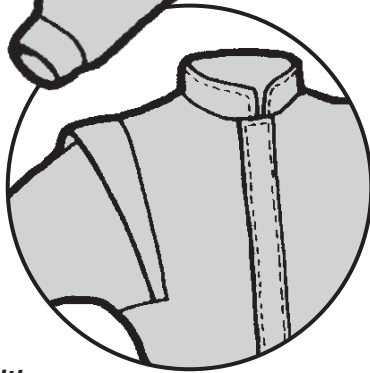
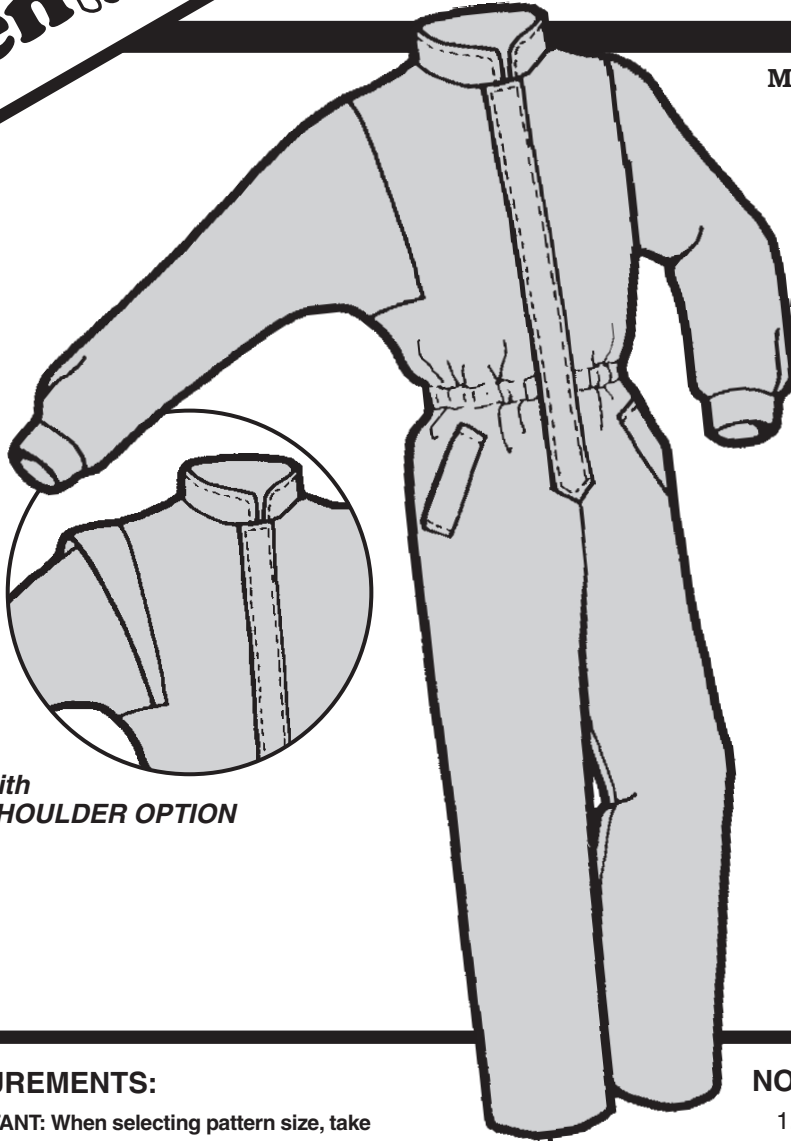
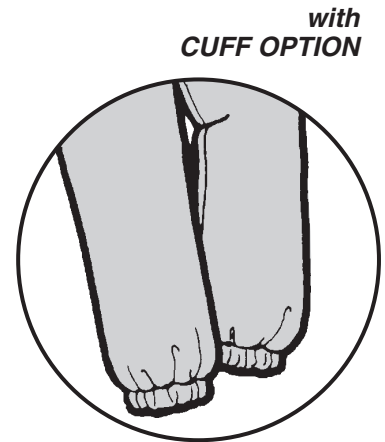


**WOMEN'S  
BLACK BUTTE JUMPSUIT**

MULTI-SIZED PATTERN  
LEVEL 3—MEDIUM



with  
SHOULDER OPTION



with  
CUFF OPTION

**MEASUREMENTS:**

IMPORTANT: When selecting pattern size, take measurements over clothing that will be worn under finished garment.

SIZE	6	8	10	12	14	16	18
Bust .....	30 <sup>1</sup> / <sub>2</sub> "	31 <sup>1</sup> / <sub>2</sub> "	32 <sup>1</sup> / <sub>2</sub> "	34"	36"	38"	40"
Waist .....	23"	24"	25"	26 <sup>1</sup> / <sub>2</sub> "	28"	30"	32"
Hip .....	32"	33 <sup>1</sup> / <sub>2</sub> "	34 <sup>1</sup> / <sub>2</sub> "	36"	38"	40"	42"
Back Waist Length	15 <sup>1</sup> / <sub>2</sub> "	15 <sup>3</sup> / <sub>4</sub> "	16"	16 <sup>1</sup> / <sub>4</sub> "	16 <sup>1</sup> / <sub>2</sub> "	16 <sup>3</sup> / <sub>4</sub> "	17"

**FABRIC:**

Outer Fabric	6-10	12-14	16-18
.....60"	3 <sup>3</sup> / <sub>8</sub> yd (3.1 m)	3 <sup>1</sup> / <sub>2</sub> yd (3.2 m)	3 <sup>1</sup> / <sub>2</sub> yd (3.2 m)
.....45"	4 <sup>1</sup> / <sub>4</sub> yd (3.9 m)	4 <sup>1</sup> / <sub>2</sub> yd (4.1 m)	4 <sup>7</sup> / <sub>8</sub> yd (4.5 m)
Interfacing .....	1/2 yd (.46 m)	1/2 yd (.46 m)	1/2 yd (.46 m)

**NOTIONS:**

- 1..... Zipper:  
22" (size 6-14), or  
24" (size 16-18)
- 1..... Locking Zipper Pull
- 2 yd (1.8 m)..... 3/4" Elastic
- 1..... All-polyester Thread

**SUGGESTED FABRICS:**

**Main Fabric** - Tightly woven Lightweight Waterproof, Waterproof Breathable, or Water-Repellent Fabric.

**Interfacing** - 3.1 oz. Needlepunch.