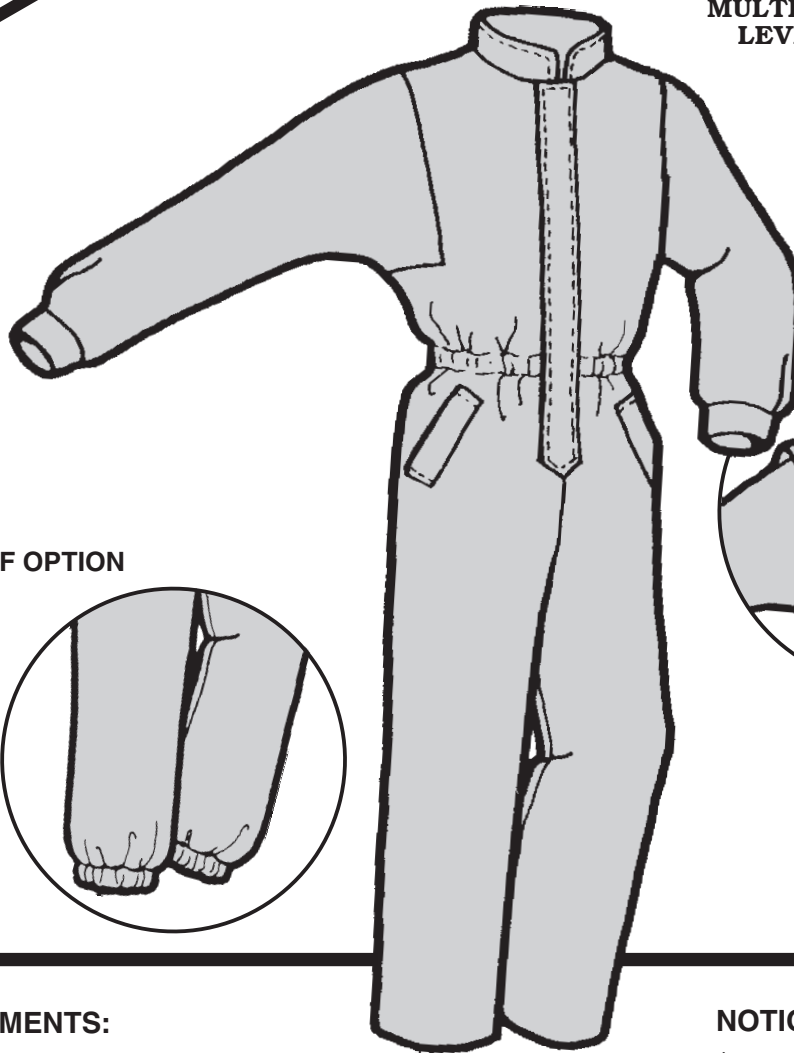
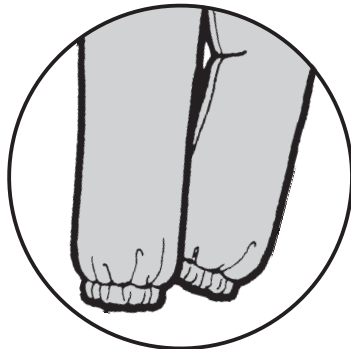


**CHILDREN'S
BLACK BUTTE JUMPSUIT**

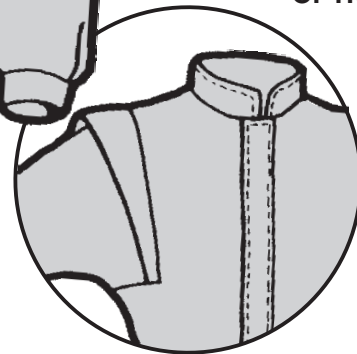
MULTI-SIZED PATTERN
LEVEL 3—MEDIUM



with
CUFF OPTION



with
SHOULDER
OPTION



MEASUREMENTS:

IMPORTANT: When selecting pattern size, take measurements over clothing that will be worn under finished garment.

SIZE	4	6	8	10	12
Chest	23"	25"	27"	28 ¹ / ₂ "	30"
Waist	21"	22"	24"	25"	26"
Hip	24"	26"	28"	30"	32"
Back Waist Length ...	9 ¹ / ₂ "	10 ¹ / ₂ "	12"	12 ³ / ₄ "	13 ¹ / ₂ "

FABRIC:

	4-6	8-10	12
Outer Fabric			
.....60"	2 yd (1.8 m)	2 ¹ / ₂ yd (2.3 m)	2 ³ / ₄ yd (2.5 m)
.....45"	2 ⁷ / ₈ yd (2.6 m)	3 yd (2.7 m)	3 ³ / ₄ yd (3.5 m)
Interfacing	3/8 yd (.34 m)	3/8 yd (.34 m)	3/8 yd (.34 m)

NOTIONS:

- 1..... Zipper:
16" (size 4),
18" (size 6-8),
20" (size 10-12)
- 1..... Locking Zipper Pull
- 1¹/₂ yd (1.4 m).... 3/4" Elastic
- 1 All-polyester Thread

SUGGESTED FABRICS:

Main Fabric - Tightly woven Lightweight Waterproof, Waterproof Breathable, or Water-Repellent Fabric.

Interfacing - 3.1 oz. Needlepunch.