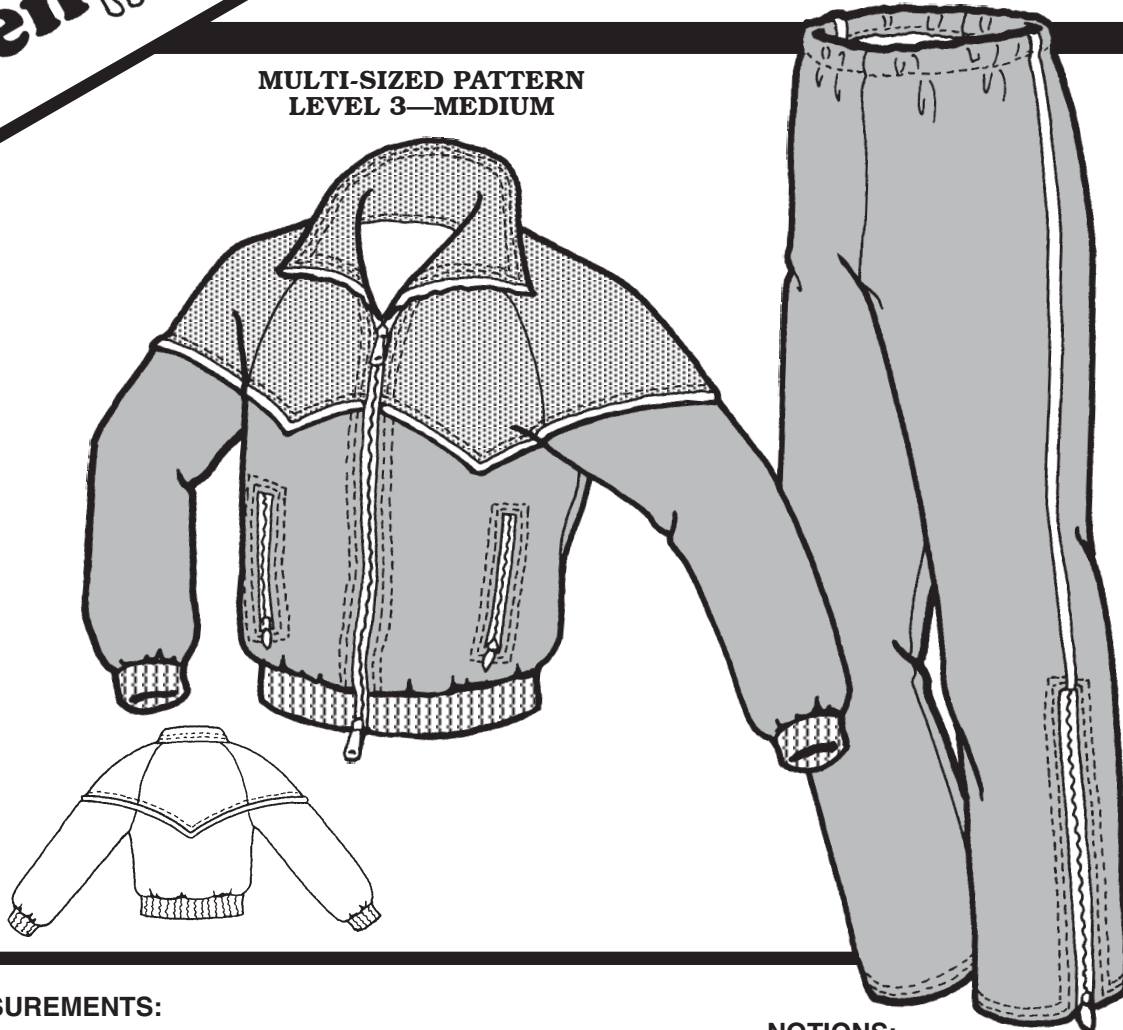


MEN'S
CHINOOK WIND AND RAIN SUIT

MULTI-SIZED PATTERN
LEVEL 3—MEDIUM



MEASUREMENTS:

IMPORTANT: When selecting pattern size, take measurements over clothing that will be worn under finished garment.

SIZE	34	36	38	40	42	44	46	48
Chest	34"	36"	38"	40"	42"	44"	46"	48"
Waist	28"	30"	32"	34"	36"	38"	40"	42"
Hip	34"	36"	38"	40"	42"	44"	46"	49"
Back Waist Length	17 ¹ / ₂ "	17 ³ / ₄ "	18"	18 ¹ / ₄ "	18 ¹ / ₂ "	18 ³ / ₄ "	19"	19 ¹ / ₄ "
Inseam Length	32"	32"	32"	32"	32"	32"	32"	32"

FABRIC:

	34-38	40-48
JACKET: Main Color	60" 1 ¹ / ₂ yd (1.4 m)	15 ⁵ / ₈ yd (1.5 m)
.....	45" 2 yd (1.8 m)	2 ¹ / ₂ yd (2.3 m)
Yoke	60" 3 ³ / ₄ yd (.7 m)	7 ⁷ / ₈ yd (.8 m)
.....	45" 1 yd (.92 m)	1 yd (.92 m)
Heavy Nylon Ribbing	3 ³ / ₈ yd (.34 m)	3 ³ / ₈ yd (.34 m)
Interfacing	1 ¹ / ₈ yd (.12 m)	1 ¹ / ₈ yd (.12 m)
PANTS: Main Color	60" 13 ³ / ₈ yd (1.3 m)	23 ³ / ₈ yd (2.2 m)
.....	45" 25 ⁵ / ₈ yd (2.4 m)	23 ³ / ₄ yd (2.5 m)

NOTIONS:

1 All-polyester Thread

JACKET:

1 28" Separating Zipper
 2 7" Pocket Zippers
 2⁵/₈ yd (2.4 m) 1¹/₁₆" Cord for Piping (opt.)
 1¹/₈ yd (.12 m) Fabric for Piping (optional)

PANTS:

2 15" Non-separating Zippers
 1¹/₄ yd (1.2 m) 1" Elastic
 2 yd (1.8 m) 1¹/₁₆" Cord for Piping (opt.)
 1¹/₈ yd (.12 m) Fabric for Piping (opt.)

SUGGESTED FABRICS:

Tightly woven Lightweight Waterproof, Waterproof Breathable, or Water-Repellent Fabric.