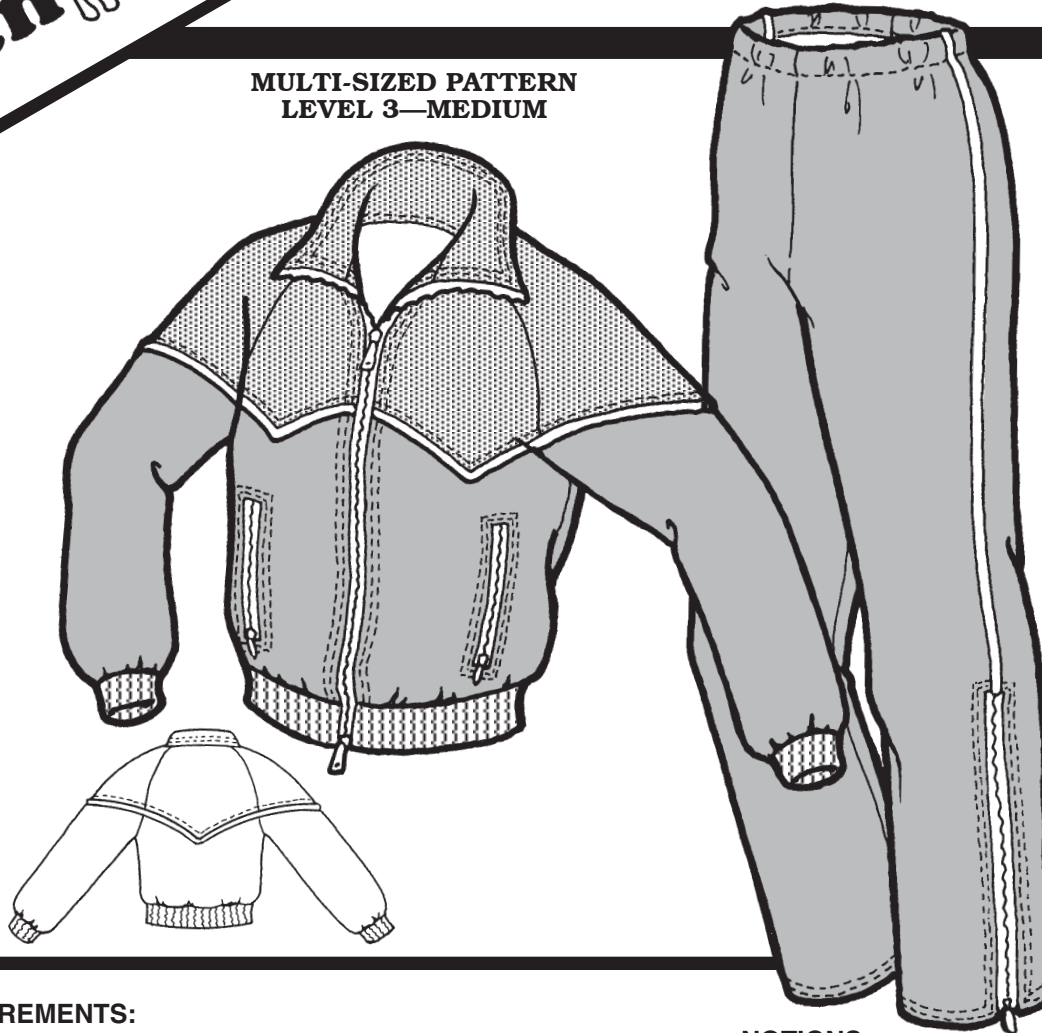


WOMEN'S
CHINOOK WIND AND RAIN SUIT

MULTI-SIZED PATTERN
LEVEL 3—MEDIUM



MEASUREMENTS:

IMPORTANT: When selecting pattern size, take measurements over clothing that will be worn under finished garment.

SIZE	6	8	10	12	14	16	18
Bust	30 ¹ / ₂ "	31 ¹ / ₂ "	32 ¹ / ₂ "	34"	36"	38"	40"
Waist	23"	24"	25"	26 ¹ / ₂ "	28"	30"	32"
Hip	31"	33 ¹ / ₂ "	34 ¹ / ₂ "	36"	38"	40"	42"
Back Waist Length	15 ¹ / ₂ "	15 ³ / ₄ "	16"	16 ¹ / ₄ "	16 ¹ / ₂ "	16 ³ / ₄ "	17"
Inseam Length	30"	30"	30"	30"	30"	30"	30"

FABRIC:

	6-14	16-18
JACKET: Main Color	60" 1 ³ / ₈ yd (1.3 m)	1 ¹ / ₂ yd (1.4 m)
.....	45" 1 ⁷ / ₈ yd (1.7 m)	2 yd (1.8 m)
Yoke	60" 3/4 yd (.7 m)	3/4 yd (.7 m)
.....	45" 7/8 yd (.8 m)	1 yd (.92 m)
Heavy Nylon Ribbing	3/8 yd (.34 m)	3/8 yd (.34 m)
Interfacing	1/8 yd (.12 m)	1/8 yd (.12 m)
PANTS: Main Color	60" 1 ³ / ₈ yd (1.3 m)	2 ¹ / ₄ yd (2.1 m)
.....	45" 2 ¹ / ₂ yd (2.3 m)	2 ⁵ / ₈ yd (2.4 m)

NOTIONS:

- 1 All-polyester Thread
- JACKET:**
- 1 26" Separating Zipper
- 2 7" Pocket Zippers
- 2¹/₂ yd (2.3 m). 1/16" Cord for Piping (opt.)
- 1/8 yd (.12 m).. Fabric for Piping (optional)
- PANTS:**
- 2 15" Non-separating Zippers
- 1 yd (.92 m) 1" Elastic
- 2 yd (1.8 m) 1/16" Cord for Piping (opt.)
- 1/8 yd (.12 m) ... Fabric for Piping (opt.)

SUGGESTED FABRICS:

Tightly woven Lightweight Waterproof, Waterproof Breathable, or Water-Repellent Fabric.